



**Putzmeister**



# 33Z-Meter

Truck-Mounted Concrete Boom Pump

# All new Putzmeister 33Z – benefits and key features



Putzmeister's new 33-4.16H boom pump incorporates the latest Putzmeister designs and technology. The 33Z combines proven components and new improvements to increase performance, reliability, and ease of use.

## Benefits at a glance

**Proven Boom Design:** The 3304.16J boom pump features a proven boom design and optimized pipe routing that reduces sharp turns and changes in pipe direction.

**New Pedestal:** The 33Z features the TRDI69 pedestal which is designed to reduce boom bounce, and improve reliability and ease of use. Overlap of the front telescopic leg is greater to distribute forces and reduce vibrations. The passenger side of the deck is now clean for storage and access. The new pedestal is designed to stiffen during pumping for added stability and to provide flexibility with the chassis while commuting.

**LED Lights:** LED lights are located in critical operation locations: rear area, surrounding area, hopper, water box, support legs, control box, gauge ports, toolbox, and end hose.

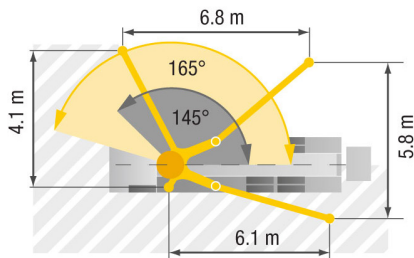
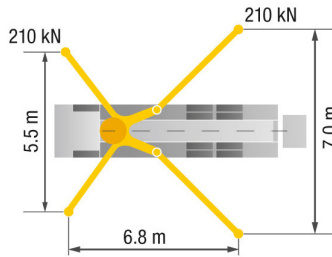
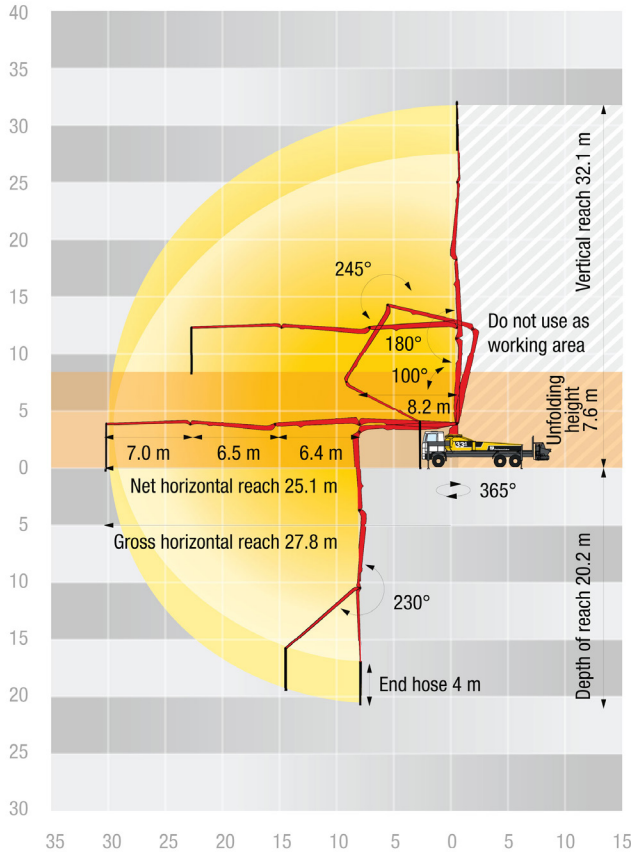
**Complete Water Tank Solution:** The ground access lever allows you to change between output and input of water. When you move the lever to input water, you can connect a hose and fill at ground level. No need to climb and drag hoses on the machine. The water tank also includes a convenient spigot into the water box and a high-quality flushing pump.

## Key Features

- Free flow hydraulics (FFH)
- Putzmeister .16H pump cell
- Improved boom design and pipe routing for better material flow
- Pre-loaded boom rest switch and boom guides for easy folding and transportation
- Outrigger legs have larger cross sections and increased clamping to improve stability
- LED lights located in critical operation locations
- Complete water tank solution that allows for maximized flexibility and use
- Improved accessibility and weatherproofing
- Modular design to easily add attachments, racks, and storage
- Single point of access for gauges and auto lube (hopper, four-point bearing, and A-hinge)
- Fuel storage in leg is a FMVSS Certified design



# 33Z-Meter Truck-Mounted Specifications



Length	35' 6"	(10.84 m)
Width	8' 2"	(2.50 m)
Height	12' 10"	(3.92 m)
Wheelbase	233"	(5,664 mm)
Front axle weight	18,640 lbs	(8,455 kg)
Approx total weight	51,474 lbs	(23,348 kg)

Based on Model Mack TERRAPRO 613 (MRU) with .16H pump cell.  
Weights are approximate and include pump, boom, truck, driver and some fuel. Varies with options selected.  
Dimensions will vary with different truck makes, models and specifications.

## Boom Specifications | Z-Fold Design

<b>Height &amp; Reach</b>		
Vertical reach	105' 3"	(32.10 m)
Horizontal reach	100' 0"	(30.50 m)
Reach from front of truck*	91' 2"	(27.80 m)
Reach depth	67' 10"	(20.20 m)
Unfolding height	24' 11"	(7.60 m)
<b>4-Section Boom</b>		
1st section articulation	100°	
2nd section articulation	180°	
3rd section articulation	245°	
4th section articulation	230°	
<b>Section Lengths</b>		
1st section length	26' 10"	(8.20 m)
2nd section length	20' 11"	(6.40 m)
3rd section length	21' 3"	(6.50 m)
4th section length	22' 11"	(7.00 m)

## General Specifications

Pipeline Size (ID) metric ends	5"	(125 mm)
Rotation	365°	
End hose — length	10' 0"	(3.00 m)
End hose — diameter	5"	(125 mm)
Outrigger spread L-R — front	18' 0"	(5.50 m)
hydraulically extended out & down		
Outrigger spread L-R — rear	22' 11"	(7.00 m)
hydraulically swing out & extend down		

## Pump Specifications

	33Z.12 H	33Z.16H
Output — rod side	144 yd <sup>3</sup> /hr (110 m <sup>3</sup> /hr)	209 yd <sup>3</sup> /hr (160 m <sup>3</sup> /hr)
— piston side	97 yd <sup>3</sup> /hr (74 m <sup>3</sup> /hr)	141 yd <sup>3</sup> /hr (108 m <sup>3</sup> /hr)
Pressure — rod side	1,233 psi (85 bar)	1,233 psi (85 bar)
— piston side	1,885 psi (130 bar)	1,885 psi (130 bar)
Material cylinder diameter	9" (230 mm)	9" (230 mm)
Stroke length	83" (2,100 mm)	83" (2,100 mm)
<b>Maximum strokes per minute</b>		
— rod side	21	31
— piston side	14	21
Volume control	0-Full	0-Full
Vibrator	Standard	Standard
Hard-chromed material cylinders	Standard	Standard
Hydraulic system	Free Flow	Free Flow
Hydraulic system pressure	5,075 psi (350 bar)	5,075 psi (350 bar)
Differential cylinder diameter	5.5" (140 mm)	5.5" (140 mm)
Rod diameter	3.1" (80 mm)	3.1" (80 mm)
Maximum size aggregate	2.5" (63 mm)	2.5" (63 mm)
Water tank — pedestal	185 gal (700 L)	185 gal (700 L)

Maximum theoretical values listed.  
\* Applies to units mounted on PMA stock truck — MACK MRU 613  
• Standard delivery line system rated at max line pressure of 1,233 psi (85 bar)  
• Ergonic Pump System (EPS) is standard.



Putzmeister America, Inc.  
1733 90th Street  
Sturtevant, WI 53177 USA  
[Putzmeister.com](http://Putzmeister.com)

Phone (262) 886-3200  
Toll-free (800) 884-7210  
Fax (262) 884-6338  
[pmr@putzmeister.com](mailto:pmr@putzmeister.com)